



SHOEBOX AREA LUMINAIRE

Project Information

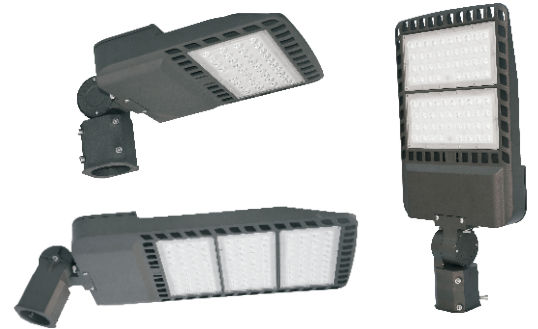
Type _____

Name _____

Voltage _____

Product Description

Area Light is the most complete LED solution for high pole parking lot lighting and car dealership lighting. Its beautiful low profile appearance satisfies the most demanding architects. High-performance illumination that lasts 50,000HRS. It's ideal for replacing 150-1000W Metal Halide, with typical energy savings of 80%.



Applications

Parking Lot, Road Ways, Square Parks, Outdoor Lighting Area Lights etc.



Electric Characteristic

Specification/Model	LS-7ESB100W-XXK-XT	LS-7ESB150W-XXK-XT	LS-7ESB200W-XXK-XT	LS-7ESB300W-XXK-XT
LED Chips	3030			
Input power	100W	150W	200W	300W
Lumens output	13000LM	19500LM	26000LM	39000LM
Efficiency	130LM/W	130LM/W	130LM/W	130LM/W
CRI	>72Ra			
Color Temperature	3000K 4000K 5000K			
Input voltage	100-277V UL Driver			
Light distribution type	TypeIII TypeIV Type V			
Working temperature	-30+60°C			
Junction temperature	<75°C			
lamps efficiency	≥90%			
Certificate	ETL,DLC			
Equivalent	175-200W MH/HPS	250-400W MH/HPS	400-700W MH/HPS	700-1000W MH/HPS

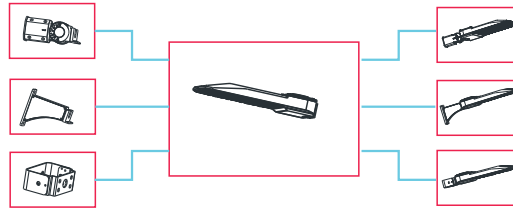
Specification/Model	LS-7ESB100WHV-XXK-XT	LS-7ESB150WHV-XXK-XT	LS-7ESB200WHV-XXK-XT	LS-7ESB300WHV-XXK-XT
LED Chips	3030			
Input power	100W	150W	200W	300W
Lumens output	13000LM	19500LM	26000LM	39000LM
Efficiency	130LM/W	130LM/W	130LM/W	130LM/W
CRI	>72Ra			
Color Temperature	3000K 4000K 5000K			
Input voltage	200-480V UL Driver			
Light distribution type	Type III Type IV Type V			
Working temperature	-30+60°C			
Junction temperature	<75°C			
lamps efficiency	≥90%			
Certificate	ETL,DLC			
Equivalent	175-200W MH/HPS	250-400W MH/HPS	400-700W MH/HPS	700-1000W MH/HPS

Ordering Information

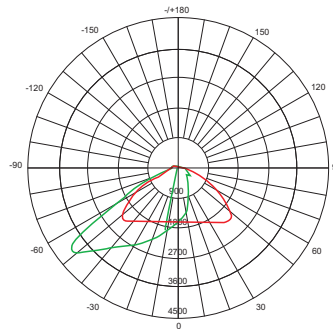
Example: LSPSB100W-40K-N-U-T-A

Product	Power	Replacement	Color Temperature	Photocell	Furnish	Head connector
LS-7ESB100W-XXK-XT	100W 1 module	175-200W MH/HPS	40K 4000K 50K 5000K	(p) yes photocell		7ESB-Shoebox XXK-30K-3000K XXK-40K-4000K XXK-50K-5000K
LS-7ESB-150W-XXK-XT	150W 2 module	250-400W MH/HPS				
LS-7ESB200W-XXK-XT	200W 2 module	400-700W MH/HPS				
LS-7ESB300W-XXK-XT	300W 3 module	700-1000W MH/HPS				
LS-7ESB100WHV-XXK-XT	100W 1 module	175-200W MH/HPS				
LS-7ESB150WHV-XXK-XT	150W 2 module	250-400W MH/HPS				
LS-7ESB200WHV-XXK-XT	200W 2 module	400-700W MH/HPS				
LS-7ESB300WHV-XXK-XT	300W 3 module	700-1000W MH/HPS				

Connector options



Photometrics

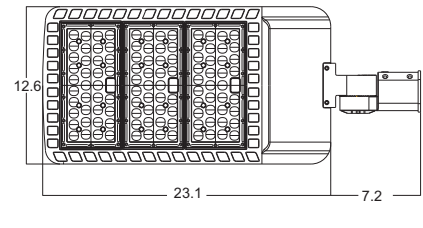
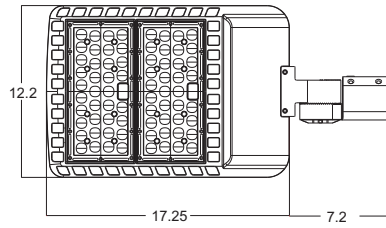
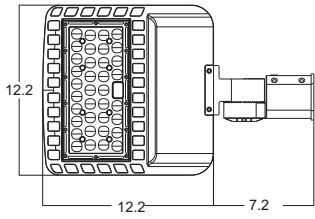


Type III

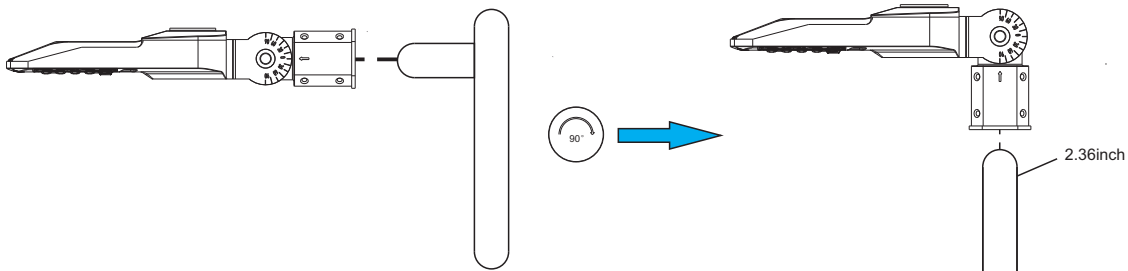
Projected LED Lumen Maintenance

Operating hours	0	25000	50000
Lumen maintenance factor	1	0.91	0.8

SLIP FITTER SIZE



SLIP FITTER MOUNTING INSTRUCTIONS

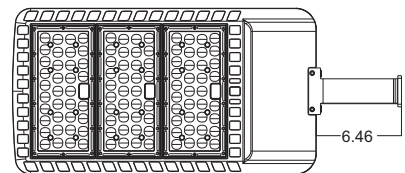
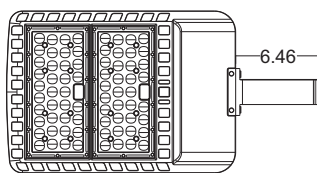
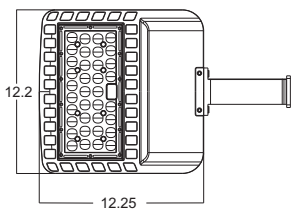


Step1
Connect the AC wire, and then insert the arm of the slip fitter to the pole

Step2
Tighten the Screws on the side of the arm and then power on

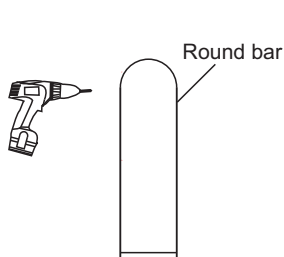
THIS PRODUCT ORIGINALLY COMES WITH AN POLE MOUNTING, TO MAKE IT APPLICABLE IN DIFFERENT SETTINGS, IT HAS PROVIDED OTHER MOUNTING OPTIONS FOR FREE, UPON REQUEST

DM SIZE

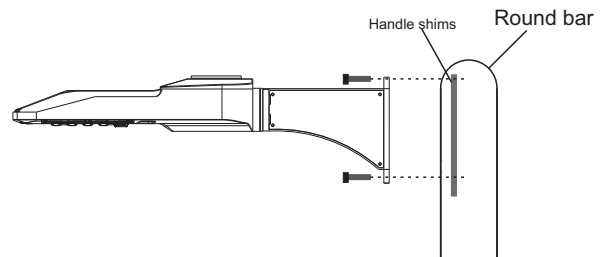


DM installation method

A:

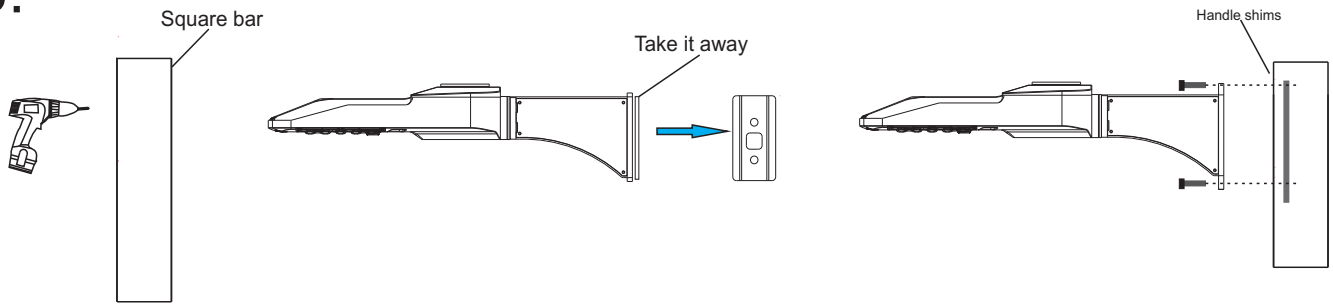


Step1:
In the circular pole above the corresponding hole



Step2:
Place the handle mounting plate inside the pole to tighten the screw

B:

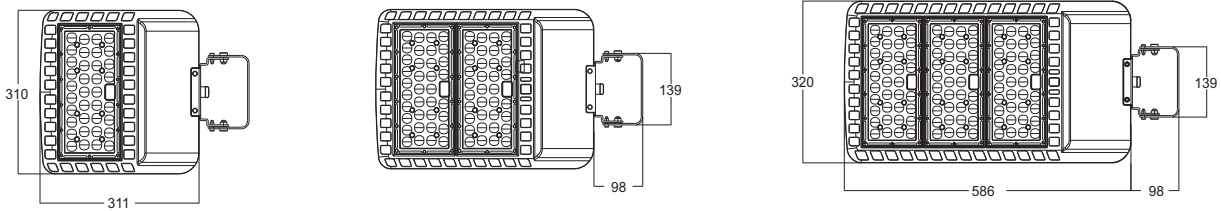


Step1:
Put the corresponding hole in
the square bar

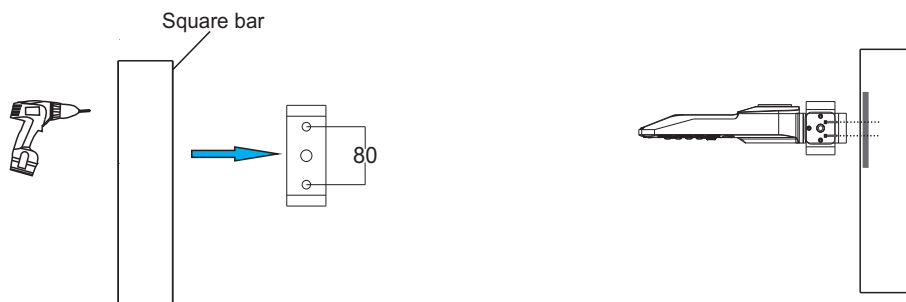
Step2:
Remove the circular rod gasket

Step3:
Place the handle mounting plate inside the
pole to tighten the screw

YM SIZE



YM installation method



Step1:
Put the corresponding hole in
the square bar

Step3:
Place the handle mounting plate inside the
pole to tighten the screw

After-sale Service

The product refers to electricians' knowledge. Please don't disassemble it by yourself. If any quality problem happens, please contact the factory for warranty details.

NOTE: Actual performance may differ as a result of end-user environment and application. All values are without notice.

