



Explosion Proof Linear Light FLF Series



Hazardous and Wet Locations

Product Description

FLF Series is the ideal choice for marine and hazardous applications requiring a linear design. Its rugged construction withstands strong vibrations, saltwater, corrosive elements and hazardous environments while the streamlined design sheds water.



It can be mounted on ceilings or walls using a pair of stainless steel mounting brackets.

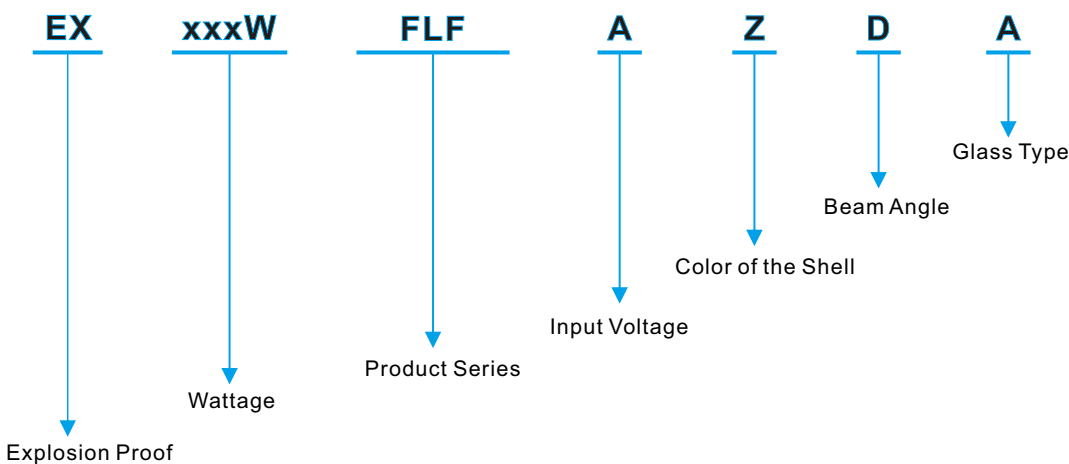
It is designed for use in hazardous locations and flammable buildings that require ATEX/IECEx rated fixtures. It is constructed of non-sparking materials for protection in flammable work sites and highly resistant to rough impacts.

Feature

- Five year warranty;
- Available in 5 lengths;
- Smooth housing for easy cleaning;
- Standard ambient -40°C-- +55°C(T5);
- CCT: 3000K / 4000K / 5000K / 6500K;
- Class 1, Division 2, Groups A, B, C, & D;
- LED Hazardous Location Enclosed and Gasketed;
- Available in 40°/60°/90° angle's light distribution;
- Long life 50,000 hours LEDs for reduced maintenance.



Ordering Guide

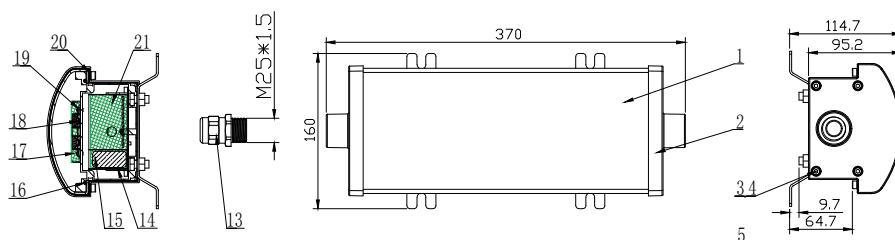


Specifications

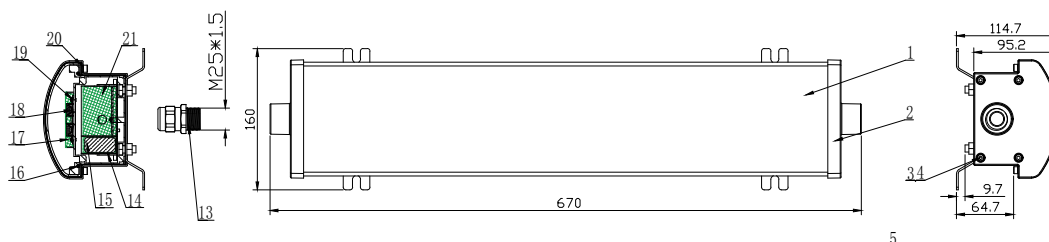
Model	Wattage	Color Temperature	Voltage	Efficiency	Other Rating	CRI	Emergency Time
EX-xxxW-FLF1 AZDA	10W/20W/30W	2200K-6500K	AC100-277V, 50/60Hz	120-140 Lm/W	IP66	>70	>1.5 Hour
EX-xxxW-FLF2 AZDA	10W/20W/30W/40W/50W						
EX-xxxW-FLF3 AZDA	10W/20W/30W/40W/50W/60W/70W						
EX-xxxW-FLF4 AZDA	10W/20W/30W/40W/50W/60W/70W/80W						
EX-xxxW-FLF5 AZDA	10W/20W/30W/40W/50W/60W/70W/80W/90W/100W						

Dimensions (mm)

FLF 1

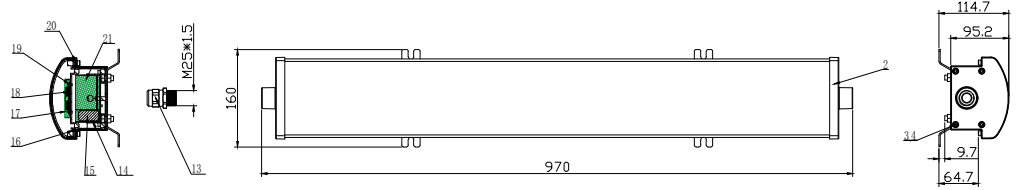


FLF 2

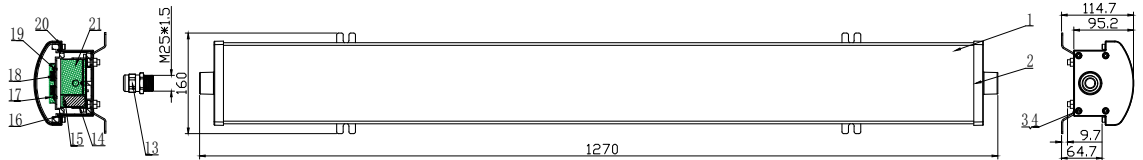


Dimensions (mm)

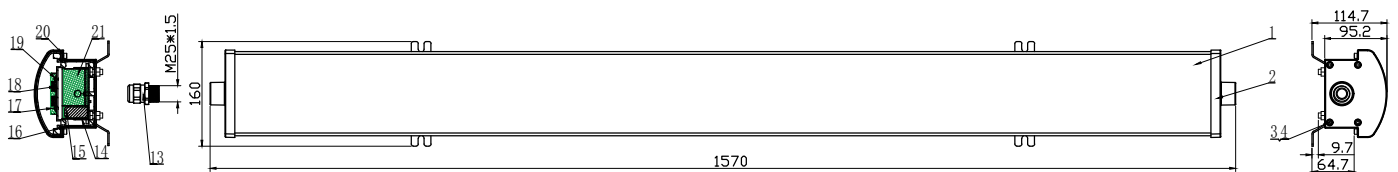
FLF 3



FLF 4

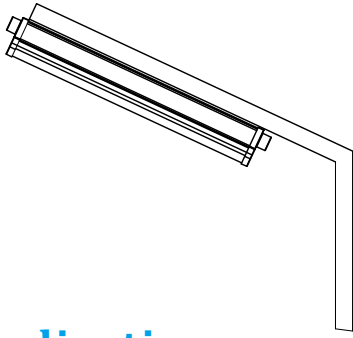


FLF 5

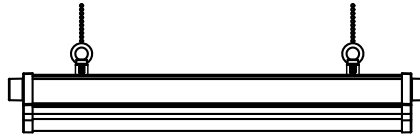


Mounting

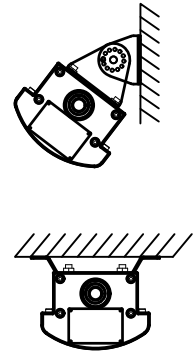
Pole Mounting



Hook Mounting



Wall Mounting



Application

Suggested Applications: Petrochemical facilities, lubrication pits, oil drilling rigs, crew quarters, solvent/cleaning areas, water treatment areas, processing plants, marine loading docks, shipyards, ports and more.

