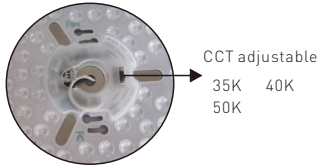
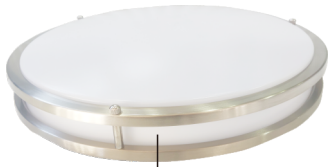


3CCT Round Ceiling LED light



CCT adjustable
35K 40K
50K



Date: Location:

Product: Project:

Quantity: Catalog#

FEATURES

- 14in 66in 3CCT Ceiling light
- Eliminate the need for recessed cans and junction boxes
- Snap-in mounting springs
- Shatter-resistant, low-glare lens

SUITABLE APPLICATIONS

- Office/Home Lighting
- Meeting room lighting
- Store lighting
- Restaurant lighting

CONSTRUCTION:

Aluminum alloy housing, Steel-encased, separated LED driver

ELECTRICAL:

120V input. PF ≥ 0.9 Flicker Free. -20°C to 45°C.

OPTICAL SYSTEM:

Super Bright 2835 LEDs. High Transmission PC cover. 120° beam angle.

INSTALLATION & MOUNTING:

Different open hole size by Ceiling mounting for easy installation.

WARRANTY:

5-year limited warranty. Actual performance may differ as a result of end-user environment and application.

PERFORMANCE

Model NO	PFC	Wattage	dimmable	Size	Voltage/Current Input	Light Efficiency	Tunable CCT
					120V		
CL0314G13PT-20	>0.9	20W	NO	14inch	0.29A	80LM/W	35K/40K/50K
CL0316G13PT-25	>0.9	25W	NO	16inch	0.45A	80LM/W	35K/40K/50K

3CCT Round Ceiling LED light

Electric Characteristic

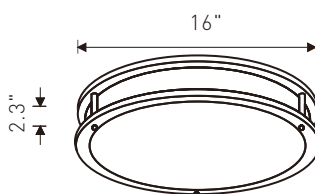
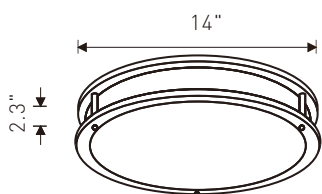
Specification/Model	CL0314G13PT-20	CL0316G13PT-25
LED Driver	UL Driver	
Input power	20W	25W
Lumens output	1600LM	2000LM
Efficiency	80LM/W	80LM/W
CRI	>90	>90
Color Temperature	35K/40K/50K	35K/40K/50K
Input voltage	120V AC	120V AC
Light distribution type	120D	120D
Working temperature	-20+45°C	-20+45°C
Junction temperature	<75°C	<75°C
lamps efficiency	≥90%	≥90%
Certificate	ENERGY STAR ETL cETL	
Equivalent	18-27W MH/HPS	27-36W MH/HPS

OPTIONAL ACCESSORIES

35K 40K 50K

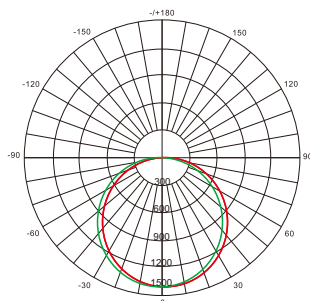
CCT
CCT tunable Function

DIMENSION



DISTRIBUTION DIAGRAM

CL0314G13PT-20

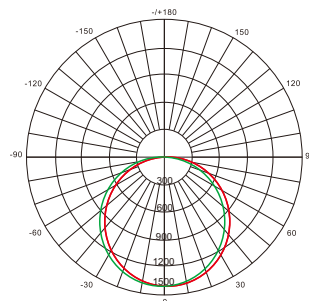


AVERAGE BEAM ANGLE(50%): 120°

Test Number: CL0314G13PT-20
Lumens:1600LM
Test Number:20W
Test Number:5000K

UNIT:CD
- C0/180,110.9
- C30/210,110.5
- C60/240,109.3
- C90/270,109.1

CL0316G13PT-25



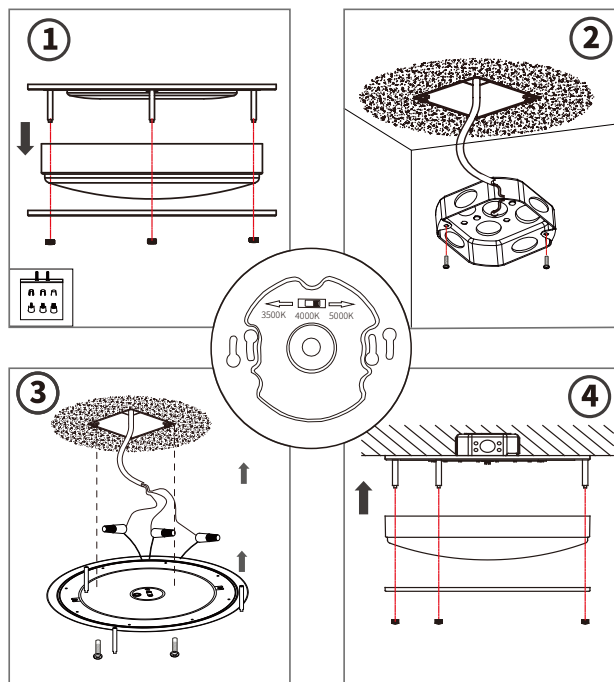
AVERAGE BEAM ANGLE(50%): 120°

Test Number:CL0316G13PT-25
Lumens:2000LM
Test Number:25W
Test Number:5000K

UNIT:CD
- C0/180,110.9
- C30/210,110.5
- C60/240,109.3
- C90/270,109.1

INSTALLATION INSTRUCTIONS

1. Before installation, remove the luminaire and accessories package from the carton. Remove the plastic lens from the luminaire by rotating the lens until the lens is free.
2. Thread the enclosed mounting screws into junction box mounting holes, and partially tighten the screws.
3. Pull the power supply wires out from the junction box. Using wire nuts, connect the black supply wire (hot) to the black luminaire wire, the white supply wire (neutral) to the white luminaire wire, and the supply ground wire to the green luminaire wire. Wrap all wire connections with electrical tape for a secure connection.
4. After all wiring connections are secure, install the metal luminaire housing to the junction box by sliding the housing keyhole slots over the mounting screws. Rotate the luminaire housing clockwise until the screws slide into the narrow ends of the keyhole slots. Securely tighten the mounting screws.
5. Attach the plastic lens to the luminaire housing by rotating the lens until the lens is securely in place.
6. When the installation is complete, the luminaire should appear flush to the ceiling.



- Turn ON the electrical supply after installation is complete.
 - Turn the light switch ON to activate the luminaire.
- For non-user replaceable light sources: "The light source contained in this luminaire shall only be replaced by the manufacturer or his service agent or a similar qualified person."