

# GKT19-07

50W/100W

# LED STRING LIGHT



Anti-impact



IP65



Recycle



Injection molding cord,  
strong tensile strength,  
Cord: 18/2 SJTW



smaller size, only 1/2 of the  
conventional luminaire



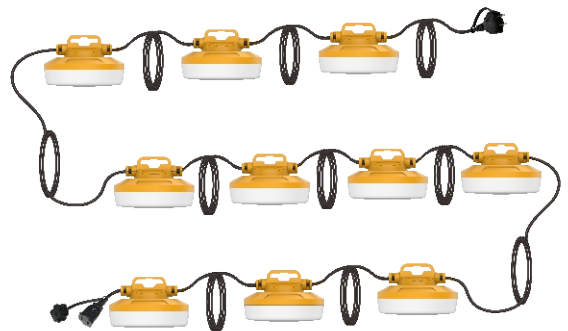
## Linkable units

**T19-50W**  
5 lamps one set



50W Maximum link 6 sets

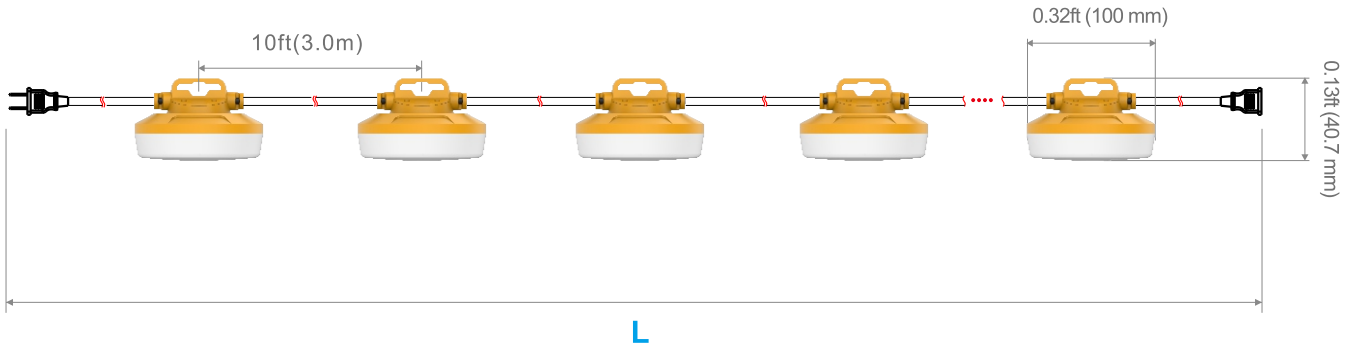
**T19-100W**  
10 lamps one set



100W Maximum link 3 sets

## Dimensions

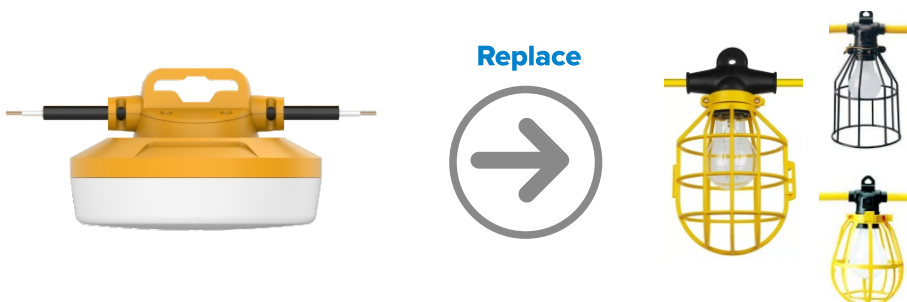
5 lamps one set (Standard)		L=50ft (15m)	
10 lamps one set (Standard)		L=100ft (30m)	
15 lamps one set	L=150ft (46m)	25 lamps one set	L=250ft (76m)
20 lamps one set	L=200ft (61m)	30 lamps one set	L=300ft (91m)



## Specifications

Power	LED Qty	PF	CRI	Voltage	CCT	Lumen	Size mm (x0.0393=inch)	Operation temp (°C / °F)	Beamangle	Weight kg (lbs=kgx2.2)	IP degree	Equal to
50W±10%	28*5 leds 2835	≥0.9	≥80	120VAC 60Hz	2700-6000K	1200*5±10%	Φ100*40.7 Φ3.94"*1.6"	-15~45°C 5~113°F	360°	NW: 1.8kg GW: 2.3kg	IP65	40W*5 Incandescent bulb
100W±10%	28*10 leds 2835	≥0.9	≥80	120VAC 60Hz	2700-6000K	1200*10±10%	Φ100*40.7 Φ3.94"*1.6"	-15~45°C 5~113°F	360°	NW: 3.6kg GW: 4.6kg	IP65	40W*10 Incandescent bulb

## Replace



## Application



### CAUTIONS

- Risk of electric shock.
- The temporary lighting are non-dimmable.
- Input Voltage: 120V
- Don't take apart the lamps without our permit.
- Please read the instruction manual carefully before installation.